

About SmartWi Connection Utility

The SmartWi Connection Utility functions largely as a switch manager between the various forms of wireless connectivity: Bluetooth®, WLAN, and WWAN using Cingular Wireless software.

By clicking on each of the three wireless options, the SmartWi Connection Utility switches to the corresponding one.

SmartWi Connection Utility main screen



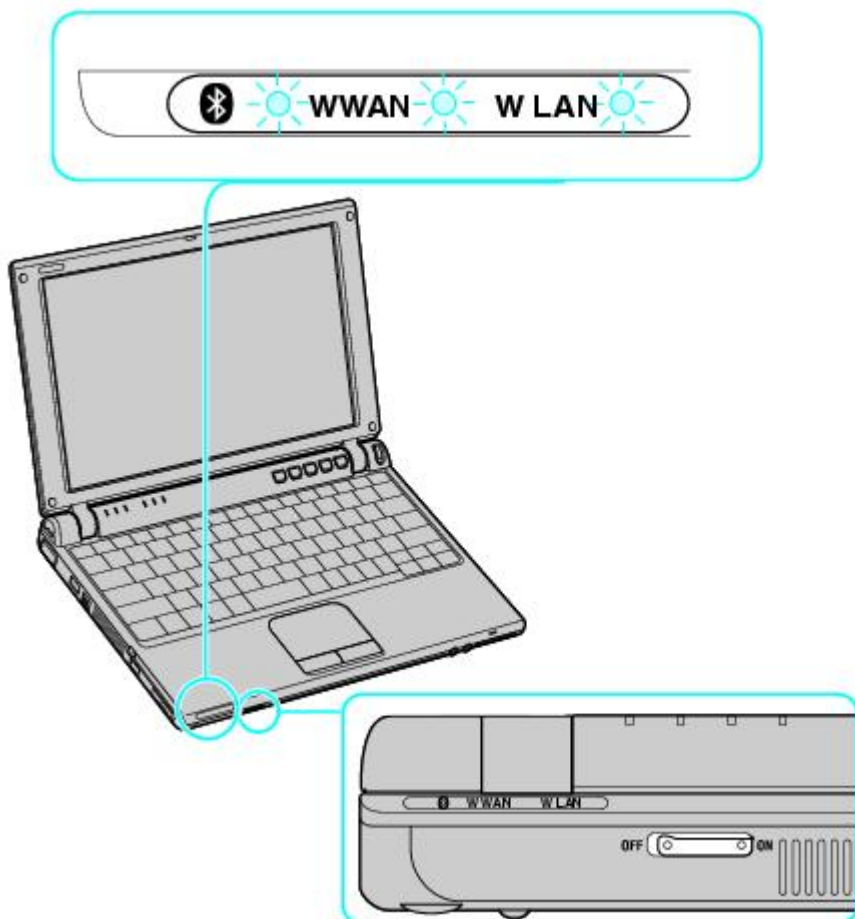
Starting SmartWi Connection Utility

At initial startup, a pop-up prompt appears from the Task Tray. Selecting Yes on the prompt launches the SmartWi Connection Utility, and then you are prompted to activate your Cingular account.

If you close the program, however, and later wish to restart it, do the following:

1. First make sure your computer is turned on.
2. Make sure the wireless switch is turned on. If it is not, locate the switch on the front left portion of your computer and slide the switch to the right.







Wireless switch and indicators



Once you turn on the wireless switch, the SmartWi Connection Utility window appears automatically.

3. You may also click the **SmartWi Connection Utility** icon in the taskbar notification area. Depending on the wireless selection, one of six icons may appear in the taskbar notification area.

SmartWi Connection Utility icons

	Bluetooth
	WWAN
	WWAN and Bluetooth
	WLAN
	WLAN and Bluetooth
	Wireless device is turned off (no WWAN or WLAN)

Note that WWAN and WLAN cannot coexist simultaneously. When one is selected, the other is automatically deselected.

4. Alternately, press **Start**, select **All Programs**, select the **VAIO SmartWi Connection Utility** folder, and click **VAIO SmartWi Connection Utility**. The **SmartWi Connection Utility** dialog box displays.

About the Wireless Switching Window

The Wireless Switching Window is another utility that enables switching between wireless modes. It promotes ease of use by allowing you to switch between Bluetooth®, WLAN, and WWAN simply by pressing keyboard buttons instead of using the touch pad (or a separately available USB mouse).

Using the Wireless Switching Window

To start the Wireless Switching Window in order to switch between wireless modes, simply press **Fn + F1** to bring up the window. Then hold the **Fn** key down while pressing the **F1** key to toggle between modes.

Wireless Switching Window



Using SmartWi Connection Utility

To use the SmartWi wireless connectivity features and begin using e-mail or connecting to the Internet, simply click the desired button: Cingular (for WAN connectivity), WLAN, or Bluetooth®.

SmartWi Connection Utility main screen



Using the Cingular Wireless WAN connection

To use Cingular WAN connectivity, do the following:

1. Click the **Cingular** button on the **SmartWi Connection Utility** main screen.
A **Cingular Connection Manager** launch area display appears below the button.

Cingular Connection Manager launch area



2. Click anywhere in the **Cingular Connection Manager** launch area.
The **Cingular Connection Manager** window displays.

Cingular Connection Manager main screen




3. By default, your connection to Cingular service initiates.
4. Follow any additional directions on the **Cingular Connection Manager** window displays.

 For help, click the Help drop-down menu and click Help to display the Cingular Connection Manager help file.

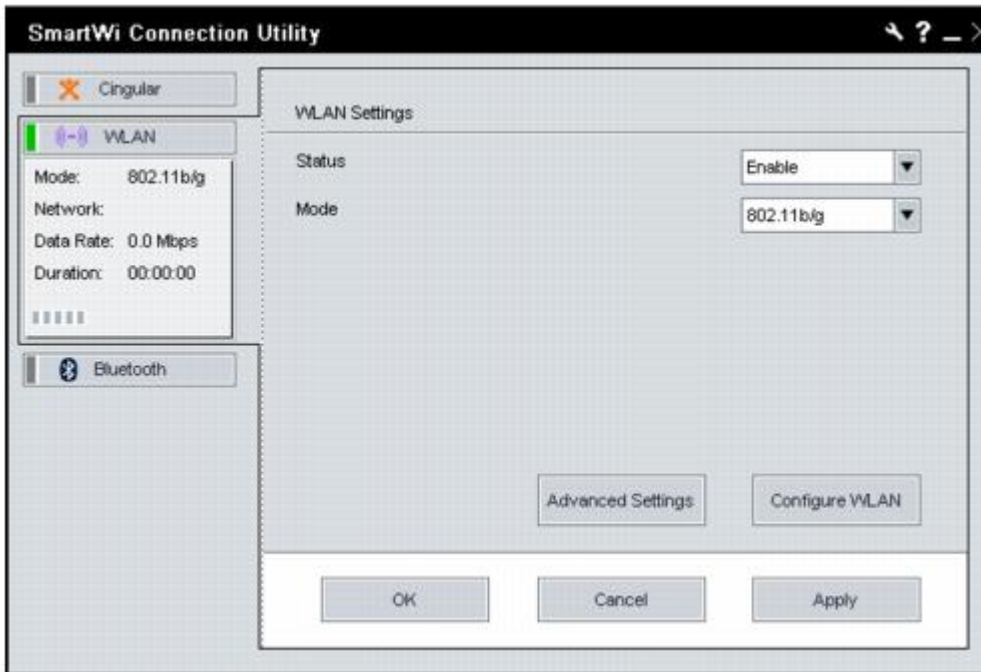
Using the Wireless LAN connection

To use Wireless LAN (WLAN) connectivity, do the following:

1. Click the **WLAN** button on the **SmartWi Connection Utility** main window. A status display appears below the button.
2. Next, click the status display below the **WLAN** button. The window enlarges to display **WLAN Settings**.

 If it is the first time connect with WLAN, the Wireless Help Utility will launch automatically and guide you during initial setup.


WLAN Settings dialog box



To deactivate WLAN connectivity, select Disable for the Status field drop-down box on the WLAN Settings dialog.

By default, WLAN uses the IEEE802.11b/g standard technology for WLAN connectivity. The standard includes the Wired Equivalent Privacy (WEP) encryption method, which is a security protocol and WiFi Protected Access.

To use IEEE802.11b or IEEE802.11g WLAN connectivity standard only, select them from the Mode field drop-down box.

 Wireless LAN devices using the IEEE802.11a standard and the ones using the IEEE802.11b or g standard cannot communicate because the frequencies are different. Wireless LAN devices using the IEEE802.11g standard can only communicate with a device using the IEEE802.11b standard, not with the IEEE802.11a standard.

IEEE802.11b: The standard speed is 11 Mbps, or about 30 to 100 times faster than a standard dial up.

IEEE802.11g: The standard speed is 54 Mbps, or about 5 times faster than a Wireless LAN device using the IEEE802.11b standard.

Using the Cingular Wireless WAN connection

To use Cingular WAN connectivity, do the following:

1. Click the **Cingular** button on the **SmartWi Connection Utility** main screen.
A **Cingular Connection Manager** launch area display appears below the button.

Cingular Connection Manager launch area



2. Click anywhere in the **Cingular Connection Manager** launch area.
The **Cingular Connection Manager** window displays.

Cingular Connection Manager main screen




3. By default, your connection to Cingular service initiates.
4. Follow any additional directions on the **Cingular Connection Manager** window displays.

 For help, click the Help drop-down menu and click Help to display the Cingular Connection Manager help file.

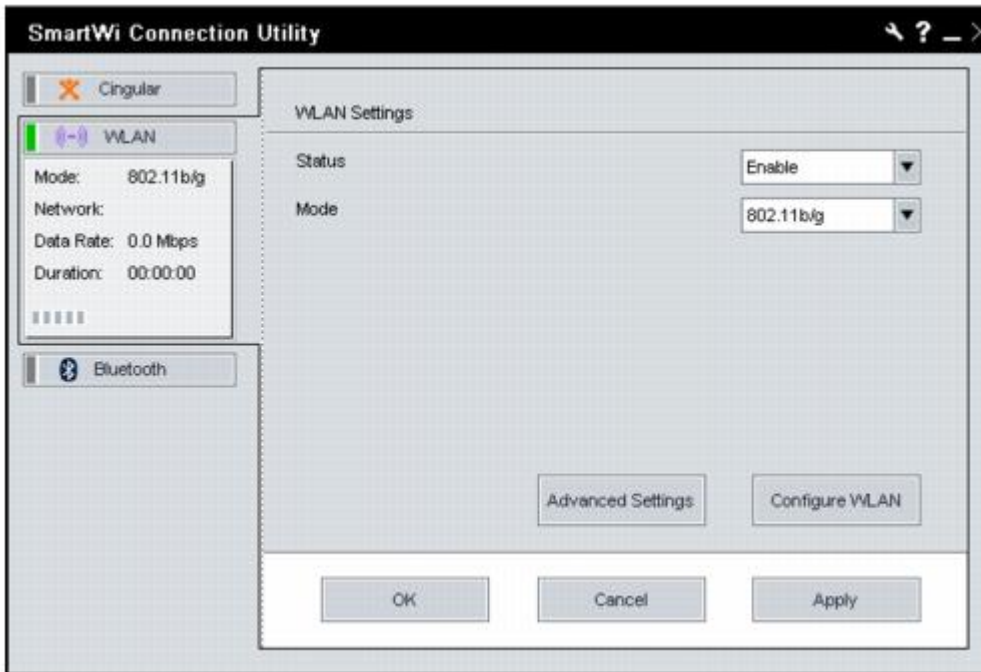
Using the Wireless LAN connection

To use Wireless LAN (WLAN) connectivity, do the following:

1. Click the **WLAN** button on the **SmartWi Connection Utility** main window. A status display appears below the button.
2. Next, click the status display below the **WLAN** button. The window enlarges to display **WLAN Settings**.

 If it is the first time connect with WLAN, the Wireless Help Utility will launch automatically and guide you during initial setup.


WLAN Settings dialog box



To deactivate WLAN connectivity, select Disable for the Status field drop-down box on the WLAN Settings dialog.

By default, WLAN uses the IEEE802.11b/g standard technology for WLAN connectivity. The standard includes the Wired Equivalent Privacy (WEP) encryption method, which is a security protocol and WiFi Protected Access.

To use IEEE802.11b or IEEE802.11g WLAN connectivity standard only, select them from the Mode field drop-down box.

 Wireless LAN devices using the IEEE802.11a standard and the ones using the IEEE802.11b or g standard cannot communicate because the frequencies are different. Wireless LAN devices using the IEEE802.11g standard can only communicate with a device using the IEEE802.11b standard, not with the IEEE802.11a standard.

IEEE802.11b: The standard speed is 11 Mbps, or about 30 to 100 times faster than a standard dial up.

IEEE802.11g: The standard speed is 54 Mbps, or about 5 times faster than a Wireless LAN device using the IEEE802.11b standard.

Configuring the WLAN connection

You can configure your computer to connect to a WLAN in one of two of the following ways:

- without an access point device (ad-hoc)
- with an access point device

An ad-hoc network is a network in which a local network is created only by the wireless devices themselves, with no other central controller or access point device. Each device communicates directly with other devices in the network. For example, you can set up an ad-hoc network easily at home to communicate between two computers.


A computer communicating with an access point device is configured as part of an infrastructure network. An infrastructure network is a network that extends an existing wired local network to wireless devices by providing an Access Point, for example the **Sony Access Point**. The Access Point bridges the wireless and wired LAN and acts as a central controller for the Wireless LAN. The Access Point coordinates transmission and reception from multiple wireless devices within a specific range.

- To configure your computer to communicate without an access point device (ad-hoc), follow these steps:
 1. On the WLAN Settings dialog box, click the **Configure WLAN** button.
The Wireless Network Connection Properties window displays.
 2. If not automatically selected, select the **Wireless Networks** tab.
 3. Click the **Add...** button.
The **Association** tab opens in the **Wireless network properties** window.
 4. Enter a **Network name (SSID)**.
You can choose a **32-digit** alphanumeric name. If you want to communicate between two or more computers, you need to configure all these computers using the same network name.
 5. Select **Open** from the **Network Authentication** drop-down box.
 6. Select **WEP** from the **Data Encryption** drop-down box.
 7. Deselect the **The key is provided for me automatically** option button. The Network key, Confirm network key, and Key index (advanced) fields activate.
 8. Enter the **Network key**.
The network key should be 5 or 13 alphanumeric characters long. You can choose whatever you want. If you want to communicate between two or more computers, you need to configure all these computers using the same network key.
 9. Enter exactly the same **Network key** again, for confirmation.
 10. Select the check box **This is a computer-to-computer (ad hoc) network; wireless access points are not used**.
 11. Click **OK**.
Your **Network name** appears in the **Preferred networks** area in the **Wireless Networks** tab display.
 12. Click **Advanced**.
The **Advanced** window displays.
 13. Select the **Computer-to-computer (ad hoc) networks only** option button.
 14. Click **Close**.
 15. Click **OK**.

Your computer is ready to communicate with another computer.

To disconnect from a computer-to-computer (ad-hoc) network, click Configure WLAN on the WLAN Settings dialog box, select the **Network Name** in the Preferred networks area, click **Remove**, and then click **OK**.

- To configure your computer to communicate with an access point device, follow these steps:

 Use the VARIO Wireless Utility to guide you through the set up process and provide you with more detailed information about wireless connections.

1. Make sure an access point is set up. See the instructions that accompanied the access point for more information.
2. Click **Start**, point to **All Programs**, and click **VAIO Wireless Utility**.
The **VAIO Wireless Utility** displays.
3. Follow the on-screen instructions.

Configuring Proxy and IP Settings for WLAN connections

You can configure Proxy and IP Settings for use in connecting to your WLAN network. To do this:

1. From the **WLAN Settings** dialog box, click **Advanced Settings**.
The Advanced Settings window displays.
2. Select a network profile from the list that you want to configure, and then click **Edit**.
 - To configure your Proxy, follow these steps:
 1. On the **Proxy** tab, select whether to use the Internet Explorer proxy settings or not, or to use a proxy server of your choice for your WLAN connection.

If you want to use a specified proxy server, you must identify its address and port.
 2. Click **Apply** and proceed to configure IP Settings or click **OK**.
 - To configure your IP Settings:
 1. On the **IP Settings** tab, select whether to obtain IP and DNS server address automatically or not. If you do not want to obtain IP automatically, you must identify the IP address, subnet mask, and default gateway addresses, and identify preferred and alternate DNS servers.

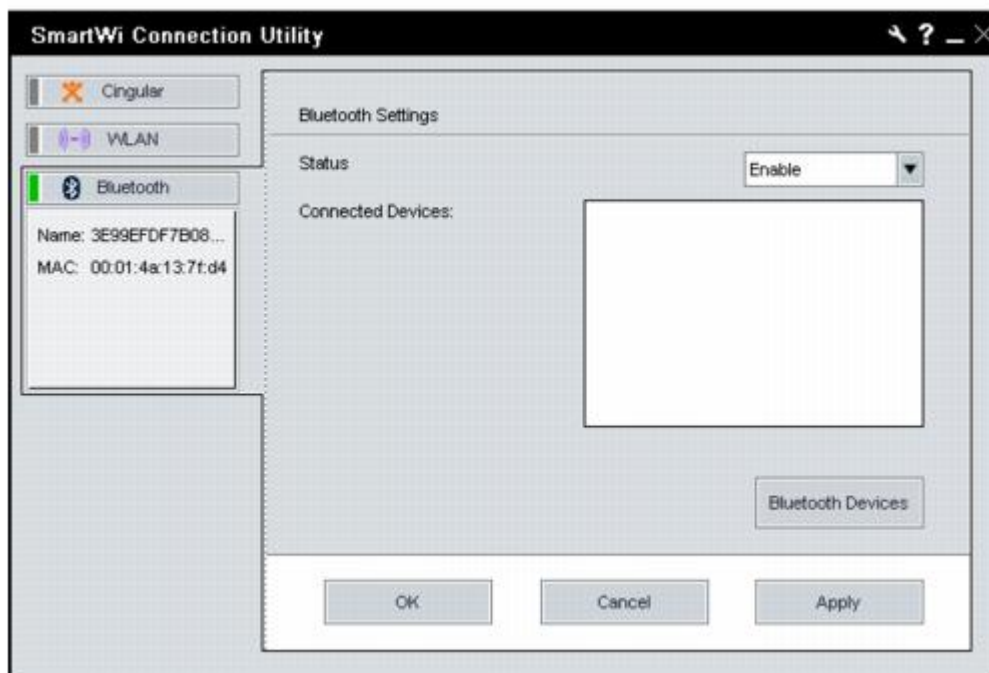
Optionally, you can select to obtain IP automatically and choose to specify preferred and alternate DNS servers.
 2. Click **Apply** and proceed to configure a Proxy or click, **OK**.
3. Click **Close** to close the Advanced Settings window.

Using the Bluetooth connection

To use Bluetooth® technology connectivity, do the following:

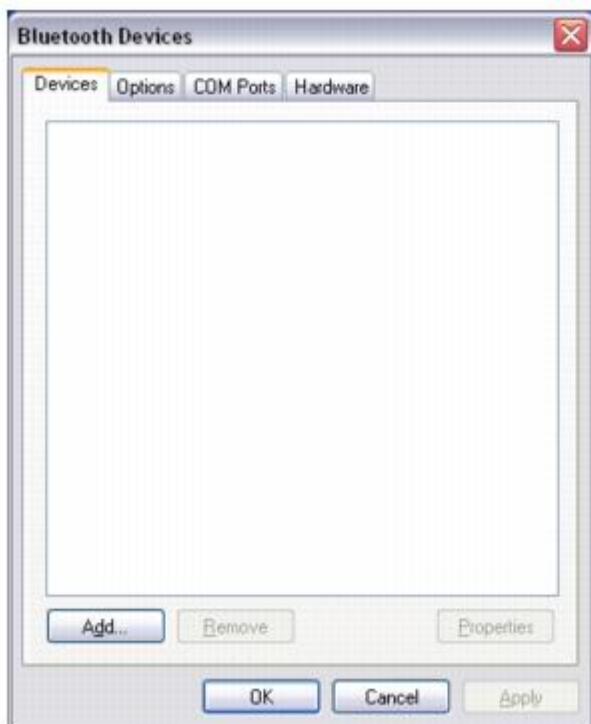
1. Click the **Bluetooth** button on the **Wireless Connection Utility** dialog box. This activates Bluetooth® technology, and a status display appears below the button.
2. Next, click the status display below the **Bluetooth** button. The window enlarges to display **Bluetooth Settings**.

Bluetooth Settings dialog box



3. Click the **Bluetooth Devices** button. The **Bluetooth Devices** dialog box displays.

Bluetooth Devices dialog box



4. From the **Bluetooth Devices** dialog box, select and search for any Bluetooth® devices in the vicinity of your computer.

Click **Add** to invoke the **Add Bluetooth Device Wizard** and follow the on-screen instructions.

When completed, click **OK**.