

FM Stereo/AM PLL Synthesized Radio

Operating Instructions



FM/AM WALKMAN

SRF-M35

Sony Corporation ©2000 Printed in China

<http://www.world.sony.com/>

WARNING

You are cautioned that any changes or modifications not expressly approved in this manual could void your authority to operate this equipment.

INFORMATION

This equipment has been tested and found to comply with the limits for a Class B digital device, pursuant to Part 15 of the FCC Rules. These limits are designed to provide reasonable protection against harmful interference in a residential installation. This equipment generates, uses, and can radiate radio frequency energy and, if not installed and used in accordance with the instructions, may cause harmful interference to radio communications. However, there is no guarantee that interference will not occur in a particular installation. If this equipment does cause harmful interference to radio or television reception, which can be determined by turning the equipment off and on, the user is encouraged to try to correct the interference by one or more of the following measures:

- Reorient or relocate the receiving antenna.
- Increase the separation between the equipment and receiver.
- Connect the equipment into an outlet on a circuit different from that to which the receiver is connected.
- Consult the dealer or an experienced radio/TV technician for help.

Before You Begin

Thank you for choosing the Sony radio! It will give you many hours of reliable service and listening pleasure.

Before operating the radio, please read these instructions thoroughly and retain them for future reference.

Features

- FM stereo /AM PLL (Phase Locked Loop) Synthesized radio
- Up to 15 stations (10 for FM, 5 for AM) can be preset for one-touch tuning

Notes on AM channel step

The AM channel step differs depending on the areas.

The channel step of this unit is factory-set to 10 kHz.

Area	Channel step
North and South American countries	10 kHz
Other countries	9 kHz

Precautions

- Operate the unit only on 3V DC with two size AAA(R03) batteries.
- Avoid exposure to temperature extremes, direct sunlight, moisture, sand, dust or mechanical shock. Never leave in a car parked in the sun.
- Should any solid object or liquid fall into the unit, remove the batteries and have the unit checked by a qualified personnel before operating it any further.
- In vehicles or buildings, radio reception may be difficult or noisy. Try listening near a window.
- To clean the casing, use a soft cloth dampened with a mild detergent solution.
- This product is not designed to be water-resistant, so you should take care to use the unit when raining, snowing or in a water-splash place.

Notes on Headphones

Road safety

Do not use headphones while driving, cycling, or operating any motorized vehicle. It may create a traffic hazard and is illegal in many areas. It can also be potentially dangerous to play your headphones at high volume while walking, especially at pedestrian crossings. You should exercise extreme caution or discontinue use in potentially hazardous situations.

Preventing hearing damage

Avoid using headphones at high volume. Hearing experts advise against continuous, loud and extended play. If you experience a ringing in your ears, reduce volume or discontinue use.

Caring for others

Keep the volume at a moderate level. This will allow you to hear outside sounds and to be considerate to people around you.

Warning

If there is lightning when you are using the unit, take off the headphones immediately.

If you have any questions or problems concerning your unit, please consult your nearest Sony dealer.

Specifications

Time display: 12-hour system

Frequency range:

Band:	Frequency	Channel step
FM:	87.5 - 108 MHz	0.1 MHz
AM:	530 - 1 710 kHz	10 kHz
FM:	87.5 - 108 MHz	0.05 MHz
AM:	531 - 1 710 kHz	9 kHz

Output:

□ jack (ø 3.5 mm stereo minijack)

Power output

18 mW + 18 mW (at 10 % harmonic distortion)

Power requirements

3V DC, two size AAA (R03) batteries

Dimensions:

Approx. 82 × 72 × 32 mm (w/h/d)
(3 1/4 × 2 7/8 × 1 5/16 inches) incl.
projecting parts and controls

Mass:

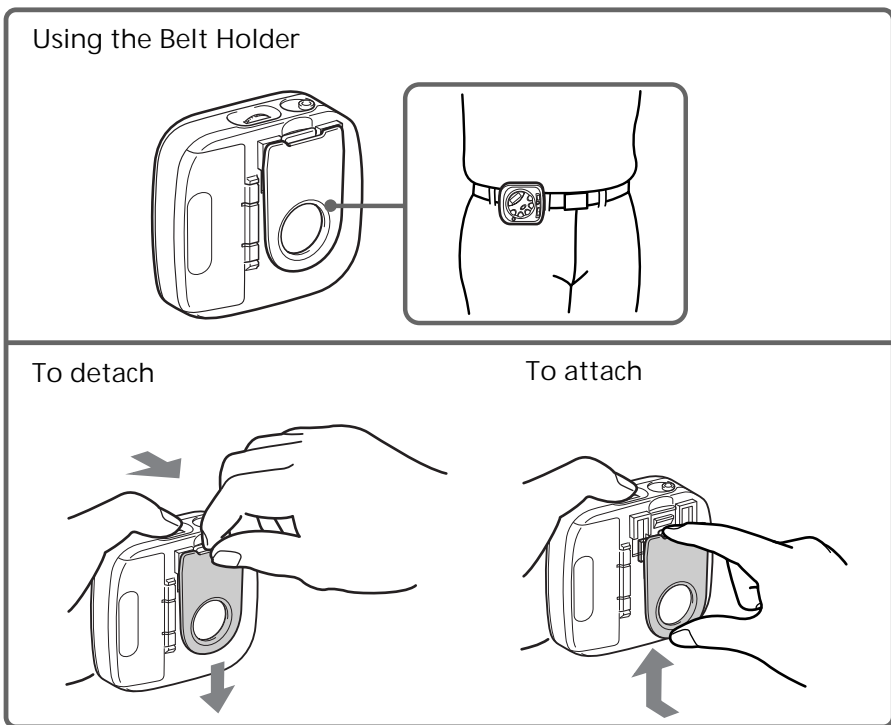
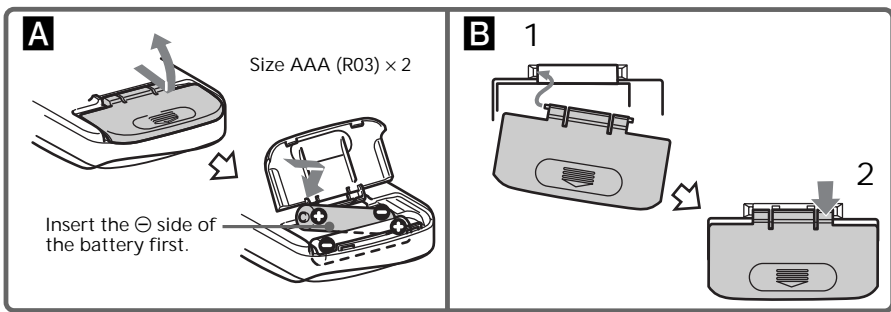
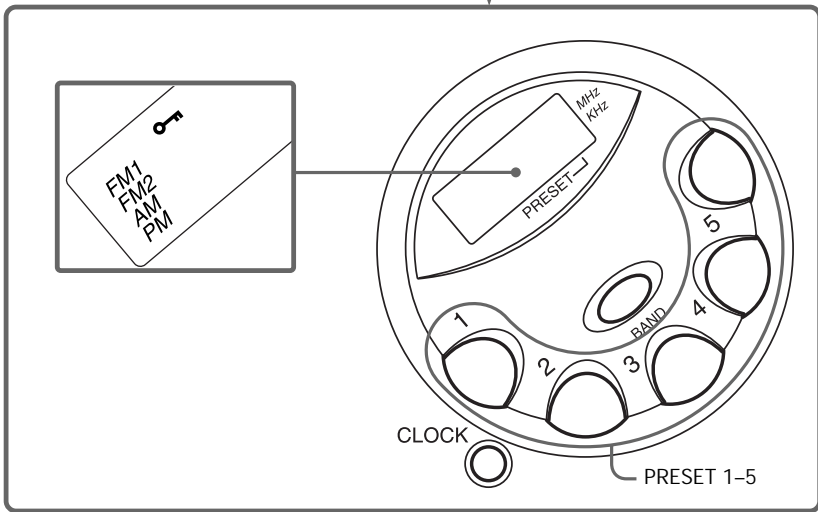
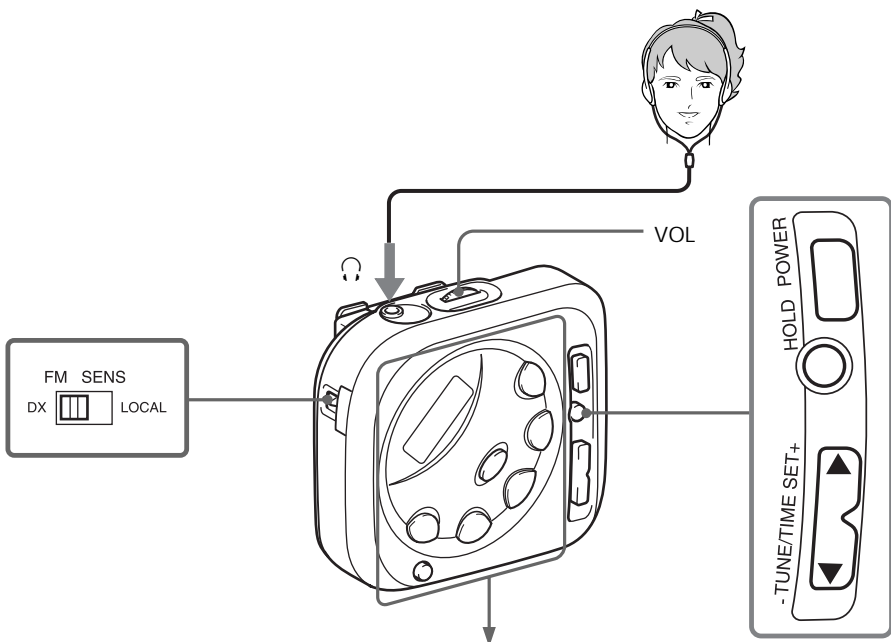
Approx. 99 g (3.5 oz) incl. batteries and the belt holder

Accessories supplied:

Stereo headphones (1)
Belt holder (1)

Design and specifications are subject to change without notice.

LIMITED WARRANTY
(Portable Audio)
FOB 30\$ 以下



Installing the Batteries (See Fig. A)

- Slide and open the lid at the rear of the radio.
- Insert two size AAA(R03) batteries (not supplied) with correct polarity.
- Close the lid.

Battery Life (approximate hours) (EIAJ*)

	Sony alkaline size AAA (LR03)	Sony size AAA (R03)
FM reception	30	13
AM reception	40	17

*Measured value by the standard of EIAJ (Electronic Industries Association of Japan) The battery life may shorten depending on the operation of the unit.

When to replace the batteries

- When the batteries become weak, the sound becomes weak or distorted. When the batteries are completely exhausted, the power is turned off and "000" in the display window flashes. When the power is turned on with the indication flashing, the power will be turned off right away. When "000" starts flashing, replace both batteries with new ones.
 - Replace the batteries within about 40 seconds after removing the batteries. If you do not replace them within 40 seconds, the preset stations may be erased, the clock setting may be cleared and "AM 12:00" flashes in the display.
 - When the batteries are removed for a long time, preset stations will be erased and "AM 12:00" will flash in the display. Store stations and set the clock again.
- Notes on batteries
- Do not charge the dry batteries.
 - Do not carry the dry batteries with coins or other metallic objects. It can generate heat if the positive and negative terminals of the batteries are accidentally contacted by a metallic object.
 - When you are not going to use the unit for a long time, remove the batteries to avoid damage from battery leakage and corrosion.
 - Do not use different types of batteries at the same time.
 - When you replace the batteries, replace all with new ones.

To attach the battery compartment lid if it is accidentally detached (see Fig. B)

- Put in one side of the lid as illustrated.
- Push the other side to attach.

Setting the Clock

The display will flash "AM 12:00" when the batteries are first inserted.

- Hold down CLOCK for more than 2 seconds. The hour flashes in the display.



- Press TUNE/TIME SET + or - until the correct hour appears in the display. To set the current time rapidly, hold down TUNE/TIME SET + or -.

- Press CLOCK. The minutes starts to flash.



Repeat step 2 and 3 to set the minute. After setting the minute, press CLOCK again. The clock starts operating and ":" starts flashing.

- 12-hour system: "AM 12:00" = midnight "PM 12:00" = noon

Changing AM Channel Step

The AM channel step differs depending on areas. The channel step of this unit is factory-set to 10 kHz to match the frequency allocation system of the country as listed. You can change the channel step.

Area	Channel step
North and South American countries	10 kHz
Other countries	9 kHz

- Press POWER to turn off the power.
- While holding down BAND, keep pressing PRESET 4 for more than 5 seconds. The AM channel step will be changed. If you proceed step 2 again, the channel step changes again.

- When the AM channel step is changed, the preset stations will be erased.

Playing the radio

Manual Tuning

- Connect the supplied headphones to the ϕ (headphones) jack.
- Press POWER to turn the radio on.
- Press BAND to select the band. Each press changes the band as follows:



* When using FM1 or FM2 preset mode, you may listen to the radio on either mode. (See "preset Tuning")

- Press TUNE/TIME SET + or - to tune in to the desired station.

The FM channel step is set to 0.1 MHz and the AM channel step is set to 10 kHz. (North and South American model) The FM channel step is set to 0.05 MHz* and the AM channel step is set to 9 kHz. (Other models)

* The FM frequency display is raised or lowered by a step of 0.1 MHz. For example, frequency 88.00 and 88.05 MHz is displayed as "88.0 MHz."

Two short beeps sound when the minimum frequency of each band is received during tuning.

- Adjust the volume using VOL.

- To see the current time while listening to the radio, press CLOCK. The current time will appear for a few seconds and then the display returns to the radio frequency.
- To turn off the radio, press POWER.
- To improve the radio reception
 - FM: Extend the headphones cord so that the FM sensitivity will be increased, as it serves as the FM antenna.
 - AM: Rotate the unit horizontally for optimum reception. A ferrite bar antenna is built into the unit.

- For FM, set FM SENS to LOCAL if interference is prevalent and reception is too strong. Under normal conditions, set it to DX.

Preset Tuning

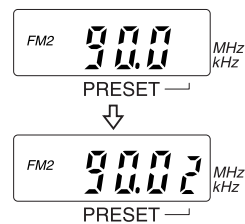
You can preset 10 stations in FM (5 stations in FM1, 5 stations in FM2) and 5 stations in AM.

Presetting a station

Example: To set FM 90 MHz in Preset button 2 for FM2

- Press POWER to turn the radio on.
- Press BAND to select FM2.
- Tune in to FM 90 MHz (See "Manual Tuning").
- Hold down PRESET button 2 for more than 2 seconds.

Two beeps sound and the preset number "2" appears in the display.



To preset another station, repeat these steps.

- To change the preset station, tune in to the desired station and hold down PRESET 1 to 5. The new station will replace the previous station on the preset button.

Tuning in a preset station

- Press POWER to turn the radio on.
- Press BAND to select the band.
- Press the desired preset tuning button.
- Adjust the volume using VOL.

Using other Functions

To prevent Accidental change -HOLD function.

Press HOLD. "o" is displayed, indicating that all the functions of the buttons are locked. To release the key protection, press HOLD again to disappear "o".

Note

If you press any button as long as "o" appears in the display, five short beeps sound.