

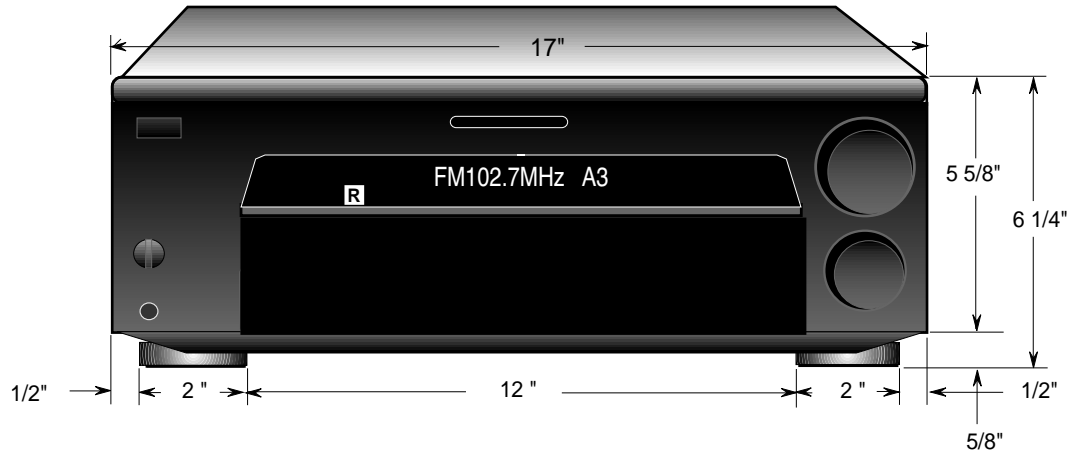
SONY

STR-DB930

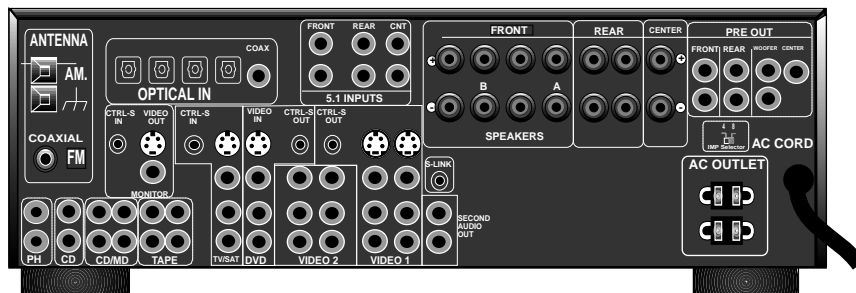
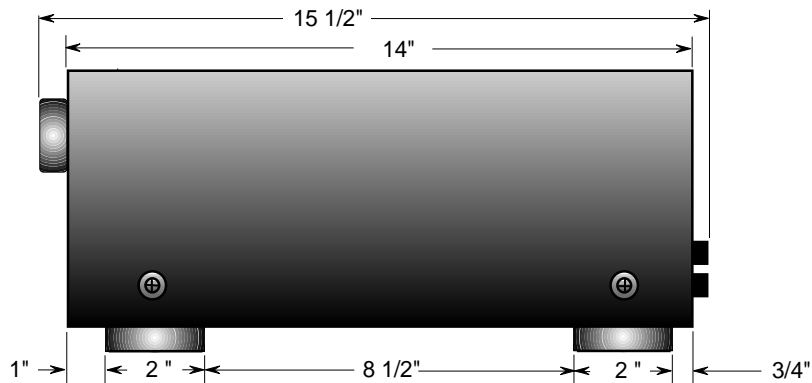
DESCRIPTION: Dolby Digital Receiver
 DIMENSIONS (WHD): 17" x 6 1/4" x 14"
 WEIGHT: Approx. 30 lbs

POWER REQUIREMENTS: 120V 60Hz
 CONSUMPTION: 290 Watts

FRONT VIEW



SIDE VIEW



NOTE :
 WHERE THERE ARE CLOSE TOLERANCES INVOLVED IN CABINET BUILDING OR APPLICATIONS WHICH REQUIRE A GREAT DEGREE OF PRECISION WE RECOMMEND THAT THE PRODUCT ITSELF BE USED TO MAKE THE ACTUAL MEASUREMENTS. SONY WILL NOT BE RESPONSIBLE FOR INACCURACIES IN THE DESIGN OR MANUFACTURE OF ENCLOSURES .