

**SONY**

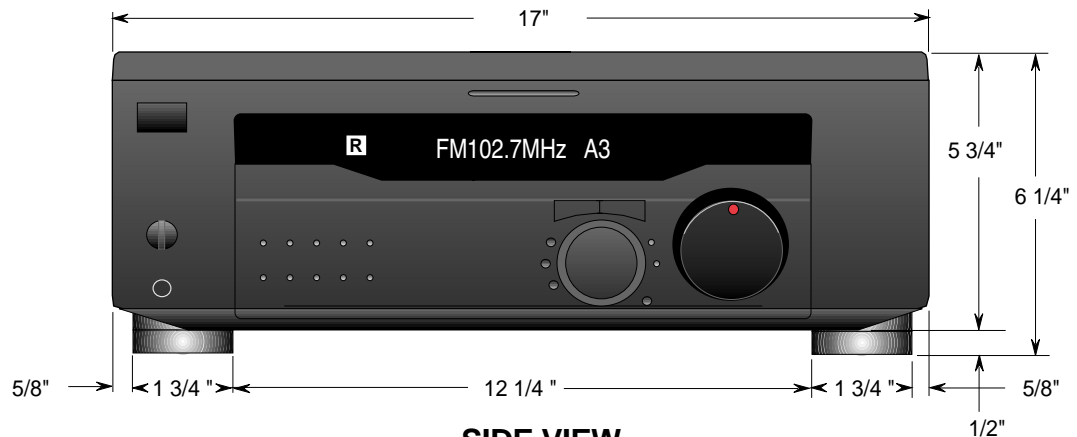
# STR-DE845

DESCRIPTION: Dolby Digital Receiver  
 DIMENSIONS (WHD): 17" x 6 1/4" x 14 7/8"  
 WEIGHT: Approx 27 lbs

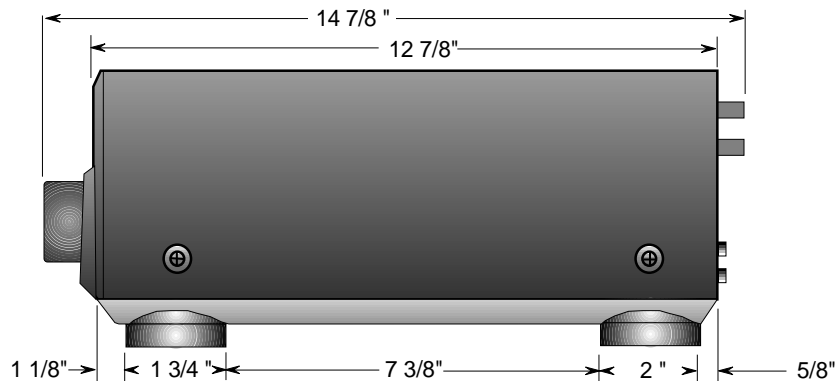
POWER REQUIREMENTS: 120V 60Hz  
 CONSUMPTION: 280 Watt

## RM-LJ302 REMOTE CONTROL

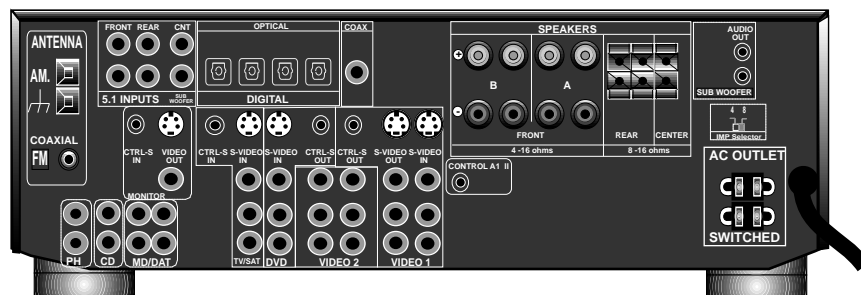
### FRONT VIEW



### SIDE VIEW



### BACK VIEW



NOTE :  
 WHERE THERE ARE CLOSE TOLERANCES INVOLVED IN CABINET BUILDING OR APPLICATIONS WHICH REQUIRE A GREAT DEGREE OF PRECISION WE RECOMMEND THAT THE PRODUCT ITSELF BE USED TO MAKE THE ACTUAL MEASUREMENTS. SONY WILL NOT BE RESPONSIBLE FOR INACCURACIES IN THE DESIGN OR MANUFACTURE OF ENCLOSURES .