

IMPORTANT! **PLEASE READ BEFORE YOU START**

These easy instructions are intended to guide you through the replacement process.

- ✓ To avoid electric shock please make sure product is turned off and AC Adaptor is disconnected from the power source. Remove jewelry before you begin work to avoid scratching the surface of your notebook computer.*
- ✓ Place your notebook computer on a clean, stable and covered surface to avoid damage to the computer's case.*
- ✓ Follow the ESD (Electrostatic Discharge) damage prevention instructions:
 - Hold parts by the edges, away from exposed circuitry when possible.
 - Do not walk around excessively as this promotes static build-up.
- ✓ The appearance of the electronic components shown in the illustrations may be different from the components shipped. This slight difference does not affect the accuracy of these instructions.

* Sony is not responsible for any loss of data associated with your computer or any damage caused by incorrect handling of the computer under these procedures. The terms of your Sony Limited Warranty continue to apply.



Step 1. Close the screen. Place your computer upside down on a protected surface with the back edge facing toward you.



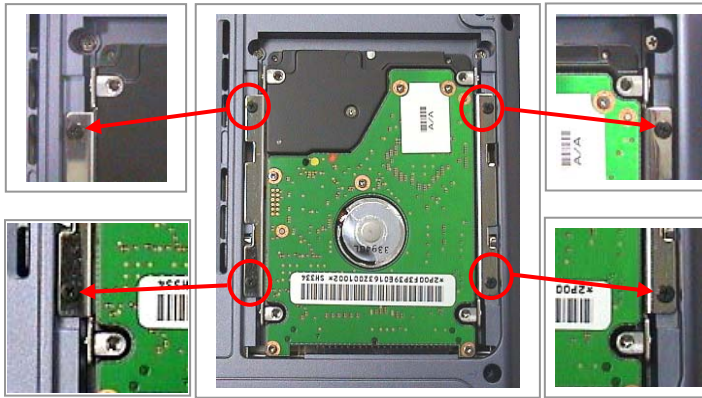
Step 2. CAUTION! ⚠️
Disconnect the power cord and remove the battery. Failure to do so can result in damage to the PC.



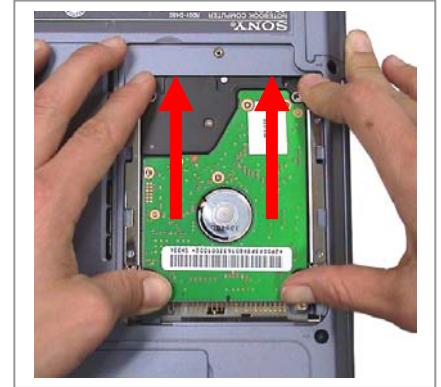
Step 3. Using the enclosed magnetic screwdriver, remove the marked screw and set aside.



Step 4. Remove hard drive access door as shown and set aside.



Step 5. Using the enclosed magnetic screwdriver, remove the four (4) screws as shown above. **CAUTION!** ⚠ Be careful not to drop screws into the unit.



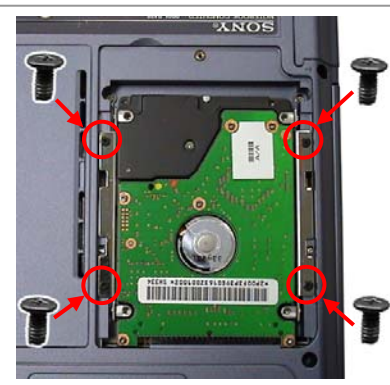
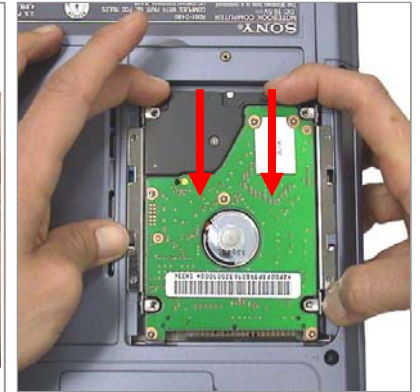
Step 6. Gently slide the drive in the direction of the arrows to release the pins from the socket.



Step 7. Gently remove the drive as shown. **CAUTION!** ⚠ Be careful not to lift the drive before releasing the pins from the socket as instructed in Step 6!



Step 8. Place the new drive flat in the opening. Slide the drive into position in the direction of the arrows, as shown above. Make sure both rows of pins have been inserted into the socket.



Step 9. Using the enclosed magnetic screwdriver, reinstall the four (4) previously removed screws. **CAUTION!** ⚠ Be careful not to drop screws into the unit, and to use the correct screws, as shown. Do not over tighten the screws!



Step 10. Reinstall the hard drive access door and screw. Power on your computer and continue with the recovery process by following the instructions described on the back of the recovery disk's case.

Return the old HDD Bay to Sony following the included shipping instructions.