

IMPORTANT! **PLEASE READ BEFORE YOU START**

These easy instructions are intended to guide you through the replacement process.

- ✓ To avoid electric shock please make sure product is turned off and AC Adaptor is disconnected from the power source. Remove jewelry before you begin work to avoid scratching the surface of your notebook computer.*
- ✓ Place your notebook computer on a clean, stable and covered surface to avoid damage to the computer's case.*
- ✓ Follow the ESD (Electrostatic Discharge) damage prevention instructions:
 - Hold parts by the edges, away from exposed circuitry when possible.
 - Do not walk around excessively as this promotes static build-up.
- ✓ The appearance of the electronic components shown in the illustrations may be different from the components shipped. This slight difference does not affect the accuracy of these instructions.

* Sony is not responsible for any loss of data associated with your computer or any damage caused by incorrect handling of the computer under these procedures. The terms of your Sony Limited Warranty continue to apply.



Step 1. Power on the PC, eject the CD/DVD drive tray by pressing the button on the drive door. Next, properly turn off the PC, leaving the tray ejected.



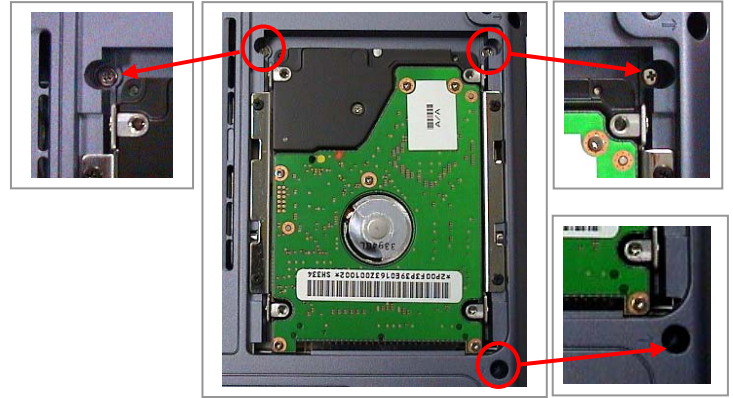
Step 2. Close the screen. Place your computer upside down on a protected surface with the back edge facing toward you.



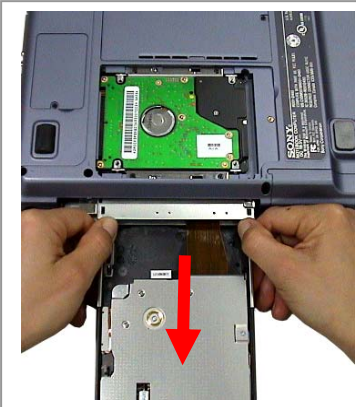
Step 3. CAUTION! ⚠️
Disconnect the power cord and remove the battery. Failure to do so can result in damage to the PC.



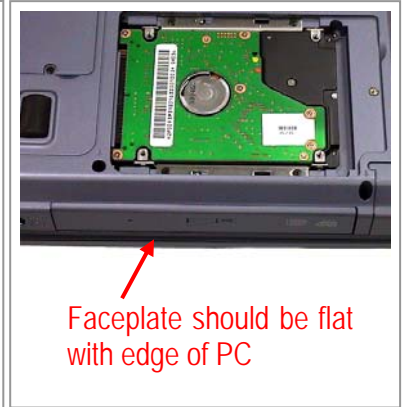
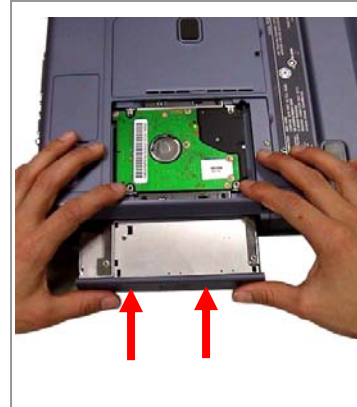
Step 4. Using the enclosed magnetic screwdriver, remove the marked screw and door as shown and set them aside.



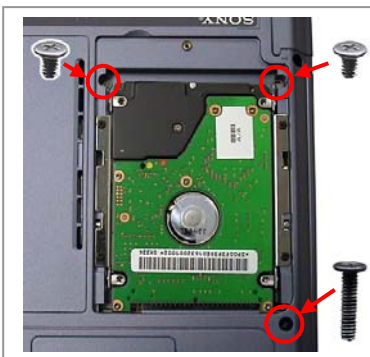
Step 5. Using the enclosed magnetic screwdriver, remove the three (3) screws as indicated in the picture.
CAUTION! ⚠ Be careful not to drop screws into the unit



Step 6. Rotate the PC. The CD/DVD drive should be facing you. Ensure that all three (3) screws from step 5 have been removed. Firmly grasp the CD/DVD drive and slide it away from the computer as shown above.



Step 7. Slide the new CD/DVD drive into the bay using firm even pressure as shown above. When properly inserted, the drive's edge is evenly aligned with the edge of the computer and the screw holes should be aligned with the screw openings.



Step 8. Using the enclosed magnetic screwdriver, reinstall the three (3) previously removed screws.

CAUTION! ⚠ Be careful not to drop screws into the inside of the unit, and to use the correct screws, as shown in the picture. Do not over tighten the screws!



Step 9. Using the enclosed magnetic screwdriver, reinstall the external door and screw. Return the old CD/DVD drive to Sony following the included shipping instructions.