

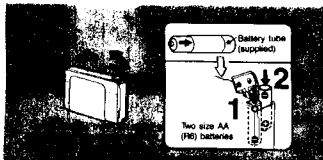
- Operate the unit only on 3 V DC. For AC operation, use the AC power adaptor recommended for the unit. For car battery operation, use the car battery cord recommended for the unit. Do not use any other type.
- Avoid exposure to temperature extremes, direct sunlight, moisture, sand, dust, or mechanical shock.
- Never leave the unit in a car parked in the sun.
- When the internal batteries are not to be used for a long time, remove them to avoid damage caused by battery leakage and corrosion.
- If the unit has not been used for a long time, set it in the playback mode to warm it up for a few minutes before inserting a cassette.
- Should any solid object or liquid fall into the unit, remove the batteries or disconnect the AC power adaptor, and have the unit checked by qualified personnel before operating it any further.
- Since a strong magnet is used for the speaker, keep personal credit cards using magnetic coding or spring-wound watches away from the unit to prevent possible damage from the magnet.

Note on cassettes longer than 90 minutes

The use of cassettes longer than 90 minutes is not recommended except for a long continuous recording or playback.

If you have any question or problem concerning your unit that is not covered in this manual, please consult the nearest Sony dealer.

Battery Installation



When to replace batteries

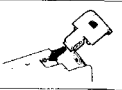
When the playback sound becomes distorted or unstable, replace both batteries with new ones.

Concerning the battery life, see "Specifications".

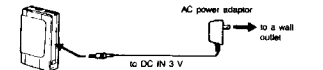
Note

Insert one battery into the supplied tube to avoid causing a short circuit.

If the battery compartment lid is detached by an accidental drop, excessive force, etc., attach it as shown in the illustration.



Mouse Current Operation



Note: The unit cannot be operated on the internal batteries when the AC power adaptor is connected to the unit.

Recording system 2-track 1-channel monaural
Frequency response 150 ~ 6000 Hz
Speaker Approx. 4.5 cm (1 7/8 inches) dia
Power output 180 mW (at 10% harmonic distortion)
Microphone 1/2" cond. mic (minijack) sensitivity 0.2 mV for 3kΩ or lower impedance microphone
Earphone jack (minijack) for 8 ~ 3000 earphone
3 V DC, two size AA (R6) batteries
DC IN 3 V jack accepts:
• Sony AC power adaptor AC D2M (optional) for use on 100 V AC, 60 Hz
• Sony DCC-70 car battery cord (optional) for use with 12 V car battery

Battery life

Battery	Recording
Sony battery SU-M3 (NS)	Approx. 4
Sony alkaline battery AM3 (R)	Approx. 12

Dimensions

TCM-71/72V: Approx. 84.1 × 136.4 × 27.1 mm (width)

(3 1/4 × 5 3/8 × 1 1/8 inches)

TCM-74V/75V: Approx. 84.1 × 127.1 × 27.1 mm (width)

(3 1/4 × 5 1/8 × 1 1/8 inches)

incl. projecting parts and controls

TCM-77: Approx. 260 × (8.2 oz)

TCM-72V/74V/75V: Approx. 270 × (96 oz) incl. batteries

Battery tube (1)

AC power adaptor AC-D2M

Car battery cord DCC-70

Monaural earphone ME-81

Connecting cord RW-C64

Supplied accessory

Optional accessories

Your dealer will not handle some of the above listed optional accessories. Please ask the dealer for detailed information.

Design and specifications subject to change without notice.

Note: Use only the recommended AC power adaptor or car battery cord manufactured by Sony. Polarity of the plug of other manufacturers may be different.



Polarity of the Sony plug

Troubleshooting Guide

Trouble

The **B** button cannot be depressed.

The **V** button cannot be locked. Tape does not move.

Recording cannot be made or is unsatisfactory.

Weak or distorted sound drops-out, loss of high frequency or excessive noise

Causes and Remedy

- No cassette in the cassette holder
- The cassette inserted has the tabs removed
- The tape is completely wound towards the arrow direction on the cassette holder.
- Incorrect polarity of batteries
- Weak batteries
- The PAUSE switch is slid down
- Improper connection of the AC power adaptor or the car battery cord

- Weak batteries
- Improper setting of VOR SENS (TCM-72V/74V/75V)
- Weak batteries

Dirty heads: Clean the points with a cotton swab or soft cloth slightly moistened with cleaning fluid or alcohol. (See "Cleaning")

Arizona	Hawaii	Missouri
Phoenix 2240 West Camelback Road Tempe, AZ 85281 (602) 978-7668	Honolulu 1901 Metropolitan Street Honolulu, HI 96819 (808) 834-8822	St. Louis 11825 O. Hazard Bridge Road Bridgeton, MO 63044 (314) 381-2741
California	Illinois	New Jersey
Burbank San Angelo area 4100 Riverside Drive, Suite A Burbank, CA 91505 (818) 245-7669	Chicago (Chicago NW) 7145 North Central Avenue Niles, IL 60548 (708) 887-2400	Paterson, NJ 1000 Washington Avenue 350 Route 1 South Paterson, NJ 07430 (201) 734-1951
Costa Mesa Orange County area 2110 Wilshire Street Costa Mesa, CA 92628 (714) 442-6523	Westport (Chicago SW) 8038 So. Western Avenue Westport, IL 60588 (312) 898-0408	Ohio Cincinnati 6250 West Pine Heights, OH 44130 (216) 284-2441
San Bruno San Francisco area 715 S. Blvd #200 San Bruno, CA 94066 (415) 871-2742	Kansas Kansas City 1111 West 98th Street Overland Park Kansas, MO 66204 (816) 888-2622	Pennsylvania Philadelphia 1000 Locust Street King of Prussia, PA 19406 (610) 264-8500
San Diego 881 Camino Drive San Diego, CA 92113 (619) 278-2724	Maryland (Washington DC)	Pennsylvania Philadelphia 10410 Perry Highway, DR. 1901 Merion Station, PA 19060 (412) 838-8466
San Jose 1739 Del Costello Road San Jose, CA 95128 (408) 280-7669	Massachusetts Boston 280 University Avenue 128 Westwood Industrial Center Westwood, MA 02090 (617) 328-1030	Texas Dallas 401 Preston Valley Shopping Center Dallas, TX 75226 (214) 861-3527
Tennessee Houston Area Center 30100 East 8th Avenue Houston, TX 77058 (361) 745-7669	Florida Miami 3330 North Turnpike Miami, FL 33150 (305) 810-8048	Virginia Richmond 3141 Richmond Avenue Richmond, VA 23227 (804) 713-7027
Washington Seattle 1000 University Street Seattle, WA 98101 (206) 952-5871	Georgia Atlanta 100 Peachtree Park Place, East Atlanta, GA 30329 (404) 952-5871	Washington Washington 8215 Parkway St. Louis Park, MN 55416 (612) 830-8000

Sony District Service Offices

Western Zone	Central Zone	Eastern Zone
Western District Sony Service Company 2378 North Street, South Costa Mesa, CA 92626 (714) 549-4838	Mid-West District Sony Service Company 7640 North Carroll Avenue Chicago, IL 60649 (312) 447-2424	Eastern District Sony Service Company 348 Route 1 Paramus, NY 10765 (201) 228-3658
Southwestern District Sony Service Company 1185 16th Street San Jose, CA 95131 (408) 280-7670	San Central District Sony Service Company 1195 16th Street San Jose, CA 95131 (408) 280-7670	Mid-Atlantic District Sony Service Company 4000 Westpark Drive King of Prussia, PA 19406 (215) 268-8816
Southeastern District Sony Service Company 2000 Phoenix Dr., Suite 100 Ft. Lauderdale, FL 33309 (305) 550-5270	South District Sony Service Company 10000 South Loop West Suite 300 West, TX 49050 (313) 241-2151	Southeastern District Sony Service Company 220 Independence North, Parkway 141 Suite 412 Atlanta, GA 30339 (404) 952-5878

LIMITED WARRANTY

SONY CORPORATION OF AMERICA warrants the product against defects in materials or workmanship as follows:

1. This warranty applies only to the original purchaser of the product and is not transferable. It covers the product against defects in materials or workmanship only. It does not cover damage to the product caused by accident, misuse, abuse, neglect, or unauthorized repairs or alterations.

2. After the first 90 day period SONY will repair, at no charge, any product malfunctions that otherwise apply to the period of one year beginning from the date of purchase.

Labels to identify and monitority of these parts is available from your SONY authorized service center or SONY SERVICE CENTER in the United States.

Proof of purchase in the form of a bill of sale is essential, which indicates that the product is within the warranty period and is covered by the warranty service. SONY requires that the purchaser retain the dealer's dated bill of sale as evidence of the date of their purchase. The retailer does not issue receipts, approvals and stamps in lieu of the product, including the purchase order which issues bills of sale. Accidental fires, theft, misuse, maintenance in accordance to consumer usage needs.

This warranty does not apply if the serial number appears on the product. The warranty is void in the United States of America.

WARRANTY IS NON-TRANSFERABLE. ALL PROVIDED UNDER THE WARRANTY IS THE EXCLUSIVE REMEDY OF THE ORIGINAL PURCHASER. SONY WILL NOT BE RESPONSIBLE FOR INCIDENTAL OR CONSEQUENTIAL DAMAGES. SONY'S OBLIGATION IS LIMITED TO THE EXTENT PROVIDED IN THIS WARRANTY. SONY DOES NOT ASSUME LIABILITY FOR INCIDENTAL OR CONSEQUENTIAL DAMAGES. THE WARRANTY DOES NOT COVER THE PRODUCT TO BE REPAIRED OR REPLACED DURING THE DURATION OF THE WARRANTY.

For more information, Sony Corporation of America has established the Customer Information Center to apply our product information to you.

SONY CUSTOMER INFORMATION CENTER
20190 BOUNTY TRAIL
MOUNTAIN VIEW, TEXAS 76155

SONY CORPORATION OF AMERICA
Sony Drive Park Ridge, New Jersey 07656

Cassette-corder

TCM-71 TCM-72V TCM-74V TCM-75V

Operating Instructions

Before operating the unit, please read this manual thoroughly and retain it for future reference.

Owner's Record

The model number is located on the bottom and the serial number is located on the back of the cassette holder. Record these numbers in the spaces provided below. Refer to them whenever you call upon your Sony dealer regarding this product.

Model No. _____ Serial No. _____

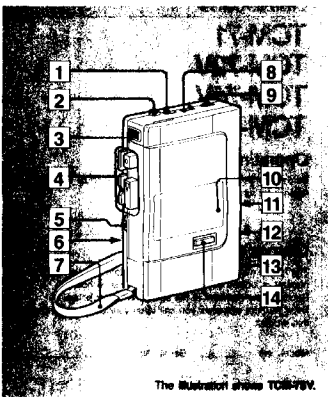
Features

- Functional details:
- TCM-71 Basic Cassette-corder model
 - TCM-72V TCM-71 + VOR system + MIC jack (TCM-72V/75V) only
 - TCM-74V TCM-72V + COUNTER
 - TCM-75V TCM-74V + CUE MARKER
- Compact size and easy operation.
 - VOR system synchronizes tapes, batteries and playback time (TCM-72V/75V) only.
 - You can quickly locate the desired portion that has been marked by CUE MARKER (TCM-75V only).
 - You can review the previously recorded portion with one-button operation.

What is VOR (Voice operated recording) system?
With this system, recording starts only when the sound is picked up and stops automatically when the sound is no longer detected.

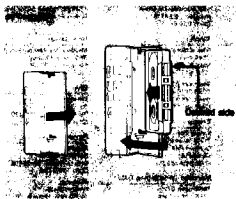
What is CUE MARKER?
You mark a desired portion by CUE MARKER while recording. Then the beep sound will tell you the marked portion while CUE or REVIEW is being pressed during tape playback. You can easily locate the certain portion you marked.

Parts Identification

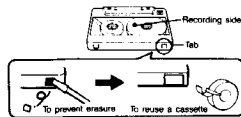


- 1 VOR (voice operated recording) ON/OFF switch (TCM-72V/74V/75V)
- 2 EAR (EARPHONE) jack
- 3 Built-in microphone
- 4 Tape operation buttons
 ● REC (record) / ▽ PLAY / ■ STOP / ▾ FF/CUE (fast forward/cue) / ▲ REW/REVIEW (rewind/review)
- 5 PAUSE switch
- 6 Speaker (rear)
- 7 Handstrap (TCM-72V/74V/75V)
- 8 Tape COUNTER and reset button (TCM-74V/75V)
 For indexing the tape contents. Before recording, push the reset button to set the counter to "000".
- 9 VOLUME/VOR SENS (VOR sensitivity: TCM-72V/74V/75V) control
 In playback mode: volume control
 In recording mode: VOR sensitivity control
- 10 Cassette holder
- 11 MIC PLUG IN POWER (external microphone) input jack (right side) (TCM-72V/74V/75V)
- 12 DC IN 3 V (external power input) jack (right side)
- 13 Battery compartment (right side)
- 14 CUE MARKER button (TCM-75V)

Cassette Insertion

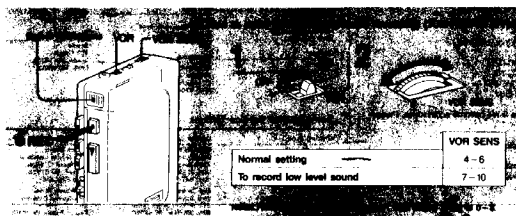


To prevent accidental erasure
 Break out the tab corresponding to the side to be recorded on. Recording on that side will be protected.



Recording

Use only TYPE I (normal) tape for recording.



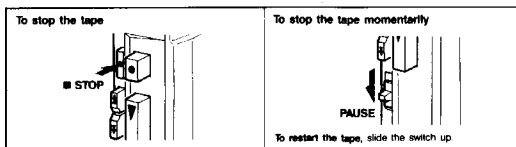
To re-record over a previously recorded portion, depress ● during playback.

To review the portion just recorded, depress ▲ while recording. When ▲ is released, the playback resumes.

To monitor the sound being recorded, connect an earphone to EAR (EARPHONE). Volume is fixed.

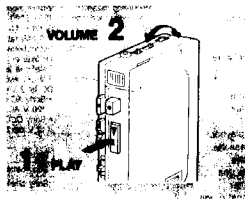
Note: Be sure not to bring the earphone close to the built-in microphone when monitoring the sound. Otherwise a howling effect (acoustic feedback) may occur.

To record from other equipment (TCM-72V/74V/75V), connect the MIC jack of the unit to the other equipment with an optional RK-G64 connecting cord.



At the end of the tape, the tape stops and locked ● and/or ▽ will be released.
 In fast forward or rewind mode, be sure to press ■ to stop the tape.

Playback



To advance the tape rapidly, press ▾.

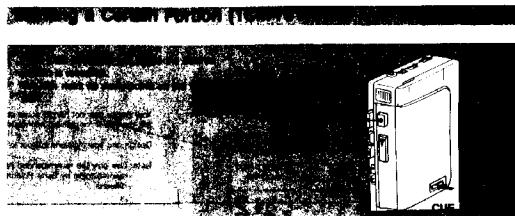
To rewind the tape, press ▲.

During playback

To skip undesired segments, press ▾.

To repeat a certain segment, press ▲.

When the button is released, playback resumes.



To search the marked portion during tape playback
 While CUE or REVIEW is pressed during tape playback, you will hear the beep sound at a certain portion you marked.
 Release CUE or REVIEW when the desired portion you marked is located.

Notes

- Beep sound may not easily be heard while CUE or REVIEW is pressed, however, this is not a trouble.
- You will not hear the beep sound during tape playback or when volume is turned down completely.
- When you press ■ just after you push CUE MARKER during recording, a cue mark is not memorized.

Cleaning

