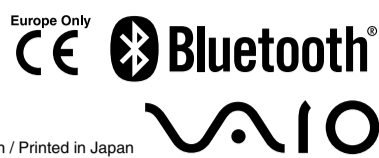




# Bluetooth® Laser Mouse VGP-BMS80

## Operating Instructions



4-158-720-11(1) © 2009 Sony Corporation / Printed in Japan

English

### WARNING

To reduce the risk of fire or electric shock, do not expose the unit to rain or moisture.

#### Owner's Record

The model number and the serial number are located inside the battery compartment of the mouse. Record the serial number in the space provided below. Refer to this number whenever you call your Sony dealer regarding this product.

Model No. VGP-BMS80  
Serial No. \_\_\_\_\_

#### Caution

Do not look directly into the lens. The laser light may cause eye injury.

To prevent battery fluid leaks and damage, observe the following precautions:

- Insert the batteries with the correct +/- orientation.
- Do not charge dry cell batteries.
- Do not mix old and new batteries, or batteries of a different type.
- If the mouse has not been used for a long time, remove the batteries.
- If a battery fluid leak occurs, carefully wipe the battery compartment, and insert new batteries.
- To prevent accidental operation, be careful not to press any buttons when replacing the batteries.

If any solid object or liquid falls onto the mouse, set the power to off and have it checked by qualified personnel before continuing its use.

Do not place the mouse in a location where it is:

- On an unstable surface
- humid or without ventilation
- Subject to excessive dust
- Subject to direct sunlight or extreme heat
- Extremely cold

If the mouse is brought directly from a cold to a warm location or is placed in a very damp room, moisture may condense on the inside of the mouse. If this occurs, the mouse may not work properly.

In this case, wait about 30 minutes for the moisture to evaporate. If the mouse does not work properly after one hour, consult your nearest Sony dealer.

#### For customers in the U.S.A.

The following FCC statement applies only to the version of this model manufactured for sale in the USA.

Other versions may not comply with FCC technical regulations.

This equipment has been tested and found to comply with the limits for a Class B digital device, pursuant to Part 15 of the FCC Rules. These limits are designed to provide reasonable protection against harmful interference in a residential installation. This equipment generates, uses, and can radiate radio frequency energy and, if not installed and used in accordance with the instructions, may cause harmful interference to radio communications. However, there is no guarantee that interference will not occur in a particular installation. If this equipment does cause harmful interference to radio or television reception, which can be determined by turning the equipment off and on, the user is encouraged to try to correct the interference by one or more of the following measures:

- Reorient or relocate the receiving antenna.
- Increase the separation between the equipment and receiver.
- Connect the equipment into an outlet on a circuit different from that to which the receiver is connected.
- Consult the dealer or an experienced radio/TV technician for help.

You are cautioned that any changes or modifications not expressly approved in this manual could void your authority to operate this equipment.

For questions regarding your product or for the Sony Service Center nearest you, call 1-888-476-6972 in the United States or 1-800-961-7669 in Canada.

This device complies with Part 15 of the FCC Rules. Operation is subject to the following two conditions: (1) this device may not cause harmful interference, and (2) this device must accept any interference received, including interference that may cause undesired operation.

#### For customers in Canada

This Class B digital apparatus complies with Canadian ICES-003.

Operation is subject to the following two conditions: (1) this device may not cause harmful interference, and (2) this device must accept any interference received, including interference that may cause undesired operation of the device.

#### For customers in the U.S.A. and Canada

This equipment complies with FCC/IC radiation exposure limits set forth for uncontrolled equipment and meets the FCC radio frequency (RF) Exposure Guidelines in Supplement C to OET65 and RSS-102 of the IC Radiation Exposure rules. This equipment has very low levels of RF energy that it deemed to comply without maximum permissive exposure evaluation (MPE). But it is desirable that it should be installed and operated with at least 20cm and more between the radiator and person's body (excluding extremities: hands, wrists, feet and ankles).

This device and its antenna(s) must not be co-located or operating with any other antenna or transmitter except Grant condition.

The equipment is classified as a CLASS 1 LASER PRODUCT and complies with the Laser Products Safety Standard IEC 60825-1(1993)+A1(1997)+A2(2001)/EN 60825-1(1994)+A1(2002)+A2(2001).

Caution - Repair and maintenance of this equipment should be made only by Sony authorized technicians. Improper repairs and use can create safety hazards.

Caution - Use of controls or adjustments or performance of procedures other than those specified herein may result in hazardous radiation exposure.

You can find the following sticker on the bottom of the equipment.



#### For customers in Europe

Sony hereby declares that this product is in compliance with the essential requirements and other relevant provisions of Directive 1999/5/EC.

To obtain a copy of the Declaration of Conformity (DoC) with the R&TTE Directive, please access the following URL.  
http://www.compliance.sony.de/

The equipment is classified as a CLASS 1 LASER PRODUCT and complies with the Laser Products Safety Standard IEC 60825-1(1993)+A1(1997)+A2(2001)/EN 60825-1(1994)+A1(2002)+A2(2001).

Caution - Repair and maintenance of this equipment should be made only by Sony authorized technicians. Improper repairs and use can create safety hazards.

Caution - Use of controls or adjustments or performance of procedures other than those specified herein may result in hazardous radiation exposure.

You can find the following sticker on the bottom of equipment.



Do not open wireless devices, as opening them, for whatever reason, could lead to damages that are not covered by the guarantee.

http://www.sony.net/

Printed on 70% or more recycled paper using VOC (Volatile Organic Compound)-free vegetable oil based ink.

In some situations or environments, the use of Bluetooth wireless technology might be restricted by the proprietor of the building or responsible representatives of the organization, for example onboard airplanes, in hospitals or in any other environment where the risk of interference with other devices or services is perceived or identified as harmful.

If you are uncertain of the policy that applies to the use in a specific organisation or environment, you are encouraged to ask for authorization to use Bluetooth wireless technology prior to switching it on.

Consult your physician or the manufacturer of personal medical devices (pacemakers, hearing aids, etc.) regarding any restrictions on the use of Bluetooth wireless technology.

#### Disposal of AA batteries

- This wireless device is powered by AA batteries.
- For installing the batteries, please refer to the "Inserting Batteries into the Mouse" section of this manual.
- Do not handle damaged or leaking batteries. Dispose of promptly and properly.
- Batteries may explode or leak if recharged, disposed of in fire, mixed with other types of battery or improperly installed.
- Batteries used in these devices may present a fire or chemical burn hazard if mistreated. Do not disassemble, heat above 60 °C or incinerate.
- Replace only with the same or equivalent type recommended by the manufacturer.
- Keep away from children.
- Dispose of properly at end-of-life.
- In some areas, the disposal of batteries in household or business waste may be prohibited. Please use the appropriate public collection system.



#### Disposal of Old Electrical & Electronic Equipment (Applicable in the European Union and other European countries with separate collection systems)

This symbol on the product or on its packaging indicates that this product shall not be treated as household waste. Instead it shall be handed over to the applicable collection point for the recycling of electrical and electronic equipment. By ensuring this product is disposed of correctly, you will help prevent potential negative consequences for the environment and human health, which could otherwise be caused by inappropriate waste handling of this product. The recycling of materials will help to conserve natural resources.

For more detailed information about recycling of this product, please contact your local Civic Office, your household waste disposal service or the shop where you purchased the product.



#### Disposal of waste batteries (applicable in the European Union and other European countries with separate collection systems)

This symbol on the battery or on the packaging indicates that the battery provided with this product shall not be treated as household waste.

On certain batteries this symbol might be used in combination with a chemical symbol. The chemical symbols for mercury (Hg) or lead (Pb) are added if the battery contains more than 0.0005% mercury or 0.04% lead. By ensuring these batteries are disposed of correctly, you will help prevent potentially negative consequences for the environment and human health which could otherwise be caused by inappropriate waste handling of the battery. The recycling of the materials will help to conserve natural resources.

In case of products that for safety, performance or data integrity reasons require a permanent connection with an incorporated battery, this battery should be replaced by qualified service staff only.

To ensure that the battery will be treated properly, hand over the product at end-of-life to the applicable collection point for the recycling of electrical and electronic equipment.

For all other batteries, please view the section on how to remove the battery from the product safely.

Hand the battery over to the applicable collection point for the recycling of waste batteries. For more detailed information about recycling of this product or battery, please contact your local Civic Office, your household waste disposal service or the shop where you purchased the product.

The manufacturer of this product is Sony Corporation, 1-7-1 Konan Minato-ku Tokyo, 108-0075 Japan. The Authorized Representative for EMC and product safety is Sony Deutschland GmbH, Hedelfinger Strasse 61, 70327 Stuttgart, Germany. For any service or guarantee matters please refer to the addresses given in separate service or guarantee documents.

#### For customers in other countries and regions

The equipment is classified as a CLASS 1 LASER PRODUCT and complies with the Laser Products Safety Standard IEC 60825-1(1993)+A1(1997)+A2(2001)/EN 60825-1(1994)+A1(2002)+A2(2001).

Caution - Repair and maintenance of this equipment should be made only by Sony authorized technicians. Improper repairs and use can create safety hazards.

Caution - Use of controls or adjustments or performance of procedures other than those specified herein may result in hazardous radiation exposure.

You can find the following sticker on the bottom of equipment.



#### Trademarks and notice

V.A.I.O is a trademark of Sony Corporation.

Microsoft, Windows, Windows Vista and Internet Explorer are registered trademarks of Microsoft Corporation in the United States and/or other countries.

The Bluetooth word mark and logos are owned by the Bluetooth SIG, Inc., and any use of such marks by Sony Corporation is under license. Other trademarks and Trade names are those of their respective owners.

"PLAYSTATION," "PlayStation" and "PS3" are trademarks and/or registered trademarks of Sony Computer Entertainment Inc.

"XMB" and "xross media bar" are trademarks of Sony Corporation and Sony Computer Entertainment Inc.

Adobe and Flash are registered trademarks of Adobe Systems Incorporated in the United States and other countries.

In this manual, Microsoft® Windows Vista® Home Basic, Microsoft® Windows Vista® Home Premium, Microsoft® Windows Vista® Business and Microsoft® Windows Vista® Ultimate are referred to as Windows Vista.

In this manual, Microsoft® Windows® 7 Ultimate, Microsoft® Windows® 7 Professional, Microsoft® Windows® 7 Home Premium, Microsoft® Windows® 7 Home Basic or Microsoft® Windows® 7 Starter are referred to as Windows 7.

All other names of systems, products, and services are trademarks of their respective owners. In this manual, the ™ or © marks are not specified.

For the rights of usage concerning the supplied software, refer to the license agreement for each software.

Sony is not responsible for damages caused by this product, the software supplied within this product, passive damage, or claims from a third party.

This product or the software supplied with this product may be subject to change without notice for modification.

### Before use

The Bluetooth Laser Mouse VGP-BMS80 is a multifunctional mouse that can connect to a V.A.I.O personal computer or PLAYSTATION 3 (henceforth, PS3) without using a dedicated device driver. It has the following modes of operation:

#### Hint

For details on switching operation mode, see the back page.

#### • PC modes

There are 2 PC modes available for the mouse to operate with your computer: Air mode and Mouse mode.

##### Air mode

You can freely operate your personal computer at a distance from the display. For example, you can operate your personal computer connected to a TV to play movies or music, or view a Web browser from the comfort of a sofa. While in Air mode, the mouse operates in your hand and does not have to be on any surface.

##### Mouse mode

You can use this Bluetooth multifunctional mouse as a standard mouse when at your personal computer.

#### • PS3 mode

There are 2 PS3 modes available for the mouse to operate with a PS3: Air mode and Mouse mode. Once connected to a PS3, the mouse functions similarly to a PS3 controller. However, the mouse has no functionality within PS3 games.

You can move the mouse pointer freely with the Optical Finger Sensor in the middle of the mouse. You can also input a URL or perform keyword searches using the supplied software keyboard\*. This is convenient for viewing or searching with a Web browser (PC mode only).

##### \* Language input available with software keyboard

The input language is switched to your personal computer's display language. Compliant languages: English, French, Spanish, Italian, Russian and Japanese. If you use a language other than above, the input language is switched to English.

This product can be used with the following (as of October 2009):

- A Sony V.A.I.O personal computer pre-installed with Windows 7 or Windows Vista (SP1 and after) operating system and equipped with Bluetooth technology.

(To install the supplied software on the computer, you will need the use of an optical disc drive.)

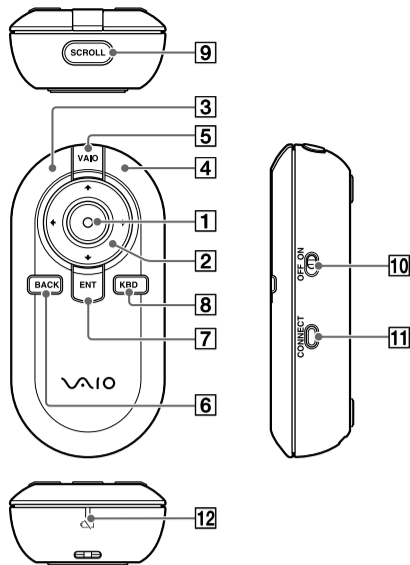
##### Note

Depending on a personal computer or software version you are using, the mouse may not function correctly.

- Sony Computer Entertainment Inc. PS3 (Update to latest system software is necessary.)

### Controls and part names

This section explains the controls and functions in PC mode. For details on button functions in PS3 mode, refer to "Using with PS3 (PS3 mode)" on the back page.



#### 1 Optical Finger Sensor

##### Air mode

Stroke the button to move the pointer. Pressing the button works in the same way as left clicking a standard mouse. In addition, holding down this button momentarily enters drag-lock state for easy dragging. To unlock drag-lock, click again.

##### Mouse mode

Stroking the button works in the same way as the wheel button on a standard mouse for scrolling through a window. Pressing the button works in the same way as left clicking a standard mouse.

#### 2 ← ↑ → ↓ button

Move the pointer from right to left, or up and down.

#### 3 Left button / 4 Right button

These buttons work in the same way as left/right clicking a standard mouse.

#### 5 V.A.I.O button

Launches configured software on the mouse in advance.

##### Hints

- To use the V.A.I.O button, install the supplied software first.
- For details on changing the running software, refer to Help. (Refer to "To see Help" on the next page too.)

#### 6 BACK button

Functions in the same way as the Back space key of the keyboard. You can use this to go back to a previously viewed Web page.

#### 7 ENT button

Functions in the same way as the Enter key on a standard keyboard. (When the software keyboard is displayed, complete the character input and close the software keyboard.)

#### 8 KBD button

Opens the dedicated software keyboard. When the software keyboard is displayed, cancel the character input and close the software keyboard.

##### Hint

To use the dedicated software keyboard, install the supplied software.

#### 9 SCROLL button

##### Air mode

Switches the function of the Optical Finger Sensor to scrolling. For details about the scrolling operation, refer to Help. (Refer to "To see Help" on the next page too.)

##### Mouse mode

Switches to Air mode.

#### 10 Power switch

#### 11 CONNECT button

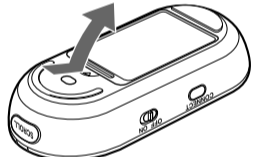
#### 12 Status light

If you press the CONNECT button, the status light flashes while waiting to connect to a personal computer or PS3, and turns off when connection is successful or after a certain time has elapsed. The status light flashing slowly indicates that the battery life is running low. Replace the batteries when the occurs. In addition, frequency of blinking of status light indicates current operation mode or setting status. For details, see Help.

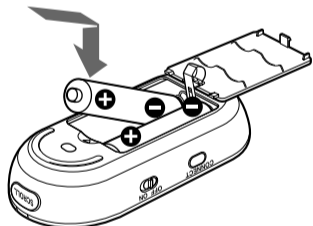
### Inserting batteries into the mouse

#### 1 Slide the power switch of the mouse to OFF.

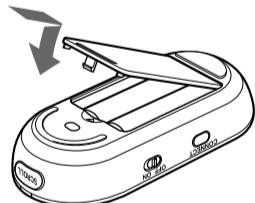
#### 2 Turn the mouse over to open the battery compartment cover.



#### 3 Insert the two supplied LR6 (size AA) batteries using the correct +/- orientation.



#### 4 Close the battery compartment cover.



##### Hint

When cursor movement becomes sluggish and the communication distance between the mouse and your personal computer decreases, check the status light on the mouse.

When not using the mouse, set the power to off. This will extend battery life.

### Replacing the batteries

The status light flashing orange indicates that the battery life is running low. Replace the batteries when this occurs.

### Enabling communication between the mouse and your personal computer

Use the Bluetooth software installed on your personal computer to enable communication between the mouse and your personal computer.

##### Note

Activate the Bluetooth software on your personal computer. Operation of the Bluetooth software may vary depending on your personal computer. For details, refer to the manuals provided with your personal computer.

The following setup instructions vary depending on your personal computer's operation system.

#### If your computer is pre-installed with Windows 7 operating system, go directly to the instructions in Case A.

If your computer is pre-installed with Windows Vista operating system, follow these steps (In certain situations, you may be directed to the instructions in Case B, Case C or Case D, depending on the Bluetooth window displayed):

#### 1 Click (Start), then "Control Panel."

#### 2 Click the "Hardware and Sound" icon.

#### 3 If the "Bluetooth Devices" icon is in the "Hardware and Sound" window:

Go to step 4.

#### If the "Bluetooth Devices" icon is not visible in the "Hardware and Sound" window:

Close the "Control Panel" and go to Case D.

#### 4 Click the "Bluetooth Devices" icon, and verify the contents of the window displayed.

##### Note

If your Control Panel was set to Classic View, double-click the "Bluetooth Devices" icon.

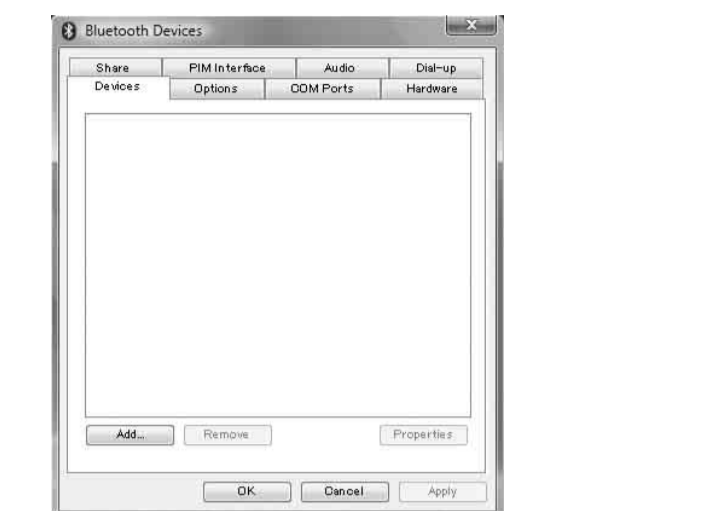
#### 5 Review the Bluetooth Devices windows shown here.

If you see window 1, go to the instructions in Case B. If you see window 2, go to the instructions in Case C.

#### Window 1



#### Window 2



### Case A

#### 1 Click (Start), then click "Devices and Printers."

#### 2 Slide the power switch of the mouse to ON.

#### 3 Press the CONNECT button located on the right side of the mouse.

The status light flashes orange.

#### 4 Click "Add a device" in the "Devices and Printers" window.

#### 5 In the device list, select "VGP-BMS80," and click "Next."

##### Hint

If the "Select a pairing option" window is displayed, select "Pair without using a code," and click "Next."

#### 6 Click "Close" in the "Add a device" window.

#### 7 Stroke the Optical Finger Sensor. If the pointer displayed on your screen moves appropriately, the connection is complete.

### Case B

#### 1 Slide the power switch of the mouse to ON.

#### 2 Press the CONNECT button located on the right side of the mouse.

The status light flashes orange.

#### 3 On the "Bluetooth Devices" window, click the "Add Wireless Device" icon.

#### 4 In the device list, select "VGP-BMS80," and click "Next."

##### Hint

If the "Select a pairing option" window is displayed, select "Pair without using a code," and click "Next."

#### 5 On the "Pair with a Wireless Device" window, click "Close."

#### 6 Close the "Bluetooth Devices" window.

#### 7 Stroke the Optical Finger Sensor. If the pointer displayed on your screen moves appropriately, the connection is complete.

### Case C

#### 1 Slide the power switch of the mouse to ON.

#### 2 On the "Bluetooth Devices" window, select the "Devices" tab and click "Add."

The "Add Bluetooth Device Wizard" appears.

#### 3 Press the CONNECT button located on the right side of the mouse.

The status light flashes orange.

#### 4 Select the "My device is set up and ready to be found" check box and click "

## Installing the supplied software

Install the supplied software to use the software keyboard.

**Notes**

- Have access to an optical disc drive, such as a CD-ROM drive. In this manual, a disc drive such as CD-ROM drive is referred to as “CD-ROM drive.” For details on your CD-ROM drive, refer to the manuals provided or included with your personal computer or CD-ROM drive.
- Before installing the supplied software, be sure to install the latest updates for your Windows OS. In addition, close all other software.
- Log on as an administrator.
- The supplied software cannot be installed on a PS3.
- This equipment works with a Windows-installed standard driver (there is no need for a special device driver).

- To run Windows operating system, turn on your personal computer.**
- Place the supplied installation CD into the CD-ROM drive.**
  - Hints**
    - If an initial window is not displayed automatically, right click “Setup.exe” of the CD-ROM, and click “Run as administrator.”
    - If the “User Account Control” window is displayed on your screen, click “Continue.”
- Install the supplied software by following the displayed instructions.**

If you go to Tutorial, you can learn more about the Air mode using the mouse and software keyboard.

**Hint**

To start Tutorial, first install Adobe Flash Player.

## Switching operation mode

**Hints**

- Air mode is the default mode.
- To switch to PS3 mode, refer to “Using with PS3 (PS3 mode).”

**Switching to Air mode**

Move your finger over the Optical Finger Sensor from side to side several times, or press the SCROLL button.


**Switching to Mouse mode**

Place the mouse on the table, and move it quickly from side to side several times. You can also switch to Mouse mode by pressing the left and right buttons at the same time (PC mode only).

## To see Help

Details on operation, setup of the mouse and troubleshooting are explained in the Help section.

**Seeing Help**

Press the KBD button, and click Help from  on the software keyboard.

## Using with PS3 (PS3 mode)

If you connect the mouse to a PS3, it can be used in the same way as a PS3 controller in Air or Mouse mode.

**Switching to PS3 mode**

Press and hold the BACK button, and slide the power switch to ON.

The status light blinks twice, and the mouse switches to PS3 mode.

**To return to PC mode from PS3 mode**

Turn the power off. Press and hold the BACK button, and slide the power switch to ON again. The status light blinks once, and the mouse returns to PC mode.

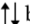

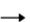
### Connecting the mouse to a PS3

**1 Set the mouse to PS3 mode.**

**2 Register the mouse as a Bluetooth device on the PS3.**

### Button functions in PS3 mode

Below explains button functions using the browser with the mouse in PS3 mode. For details on button functions other than when using the browser, see Help.

Mouse button	Functions in PS3 mode (using browser)
Optical Finger Sensor	<ul style="list-style-type: none"><li>Confirm selected item.</li> <li>Hold down momentarily to display the keyboard in the character input area.</li> <li>Hold down on a link: open linked page in new window.</li></ul> <p><b>Air mode</b></p> <p>Free cursor</p> <p><b>Mouse mode</b></p> <p>Scroll</p>
 button	Scroll or hold down to scroll quickly.
 button	Back to previous page.
 button	Go to next page.
Left button	<ul style="list-style-type: none"><li>Confirm selected item.</li> <li>Hold down momentarily to display the keyboard in the character input area.</li> <li>Hold down on a link: open linked page in new window.</li></ul>
Right button	Displays menu.
VAIO button	–
BACK button	<ul style="list-style-type: none"><li>Back or cancel.</li> <li>Hold down momentarily to close the window.</li></ul>
ENT button	<ul style="list-style-type: none"><li>Confirm selected item.</li> <li>Hold down momentarily to display the keyboard in the character input area.</li> <li>Hold down on a link: open linked page in new window.</li></ul>

**Hint**

For details on switching between Air mode and Mouse mode, refer to “Switching operation mode.”

## Precautions

**Bluetooth communications**

- The 2.4 GHz band used by Bluetooth and wireless LAN devices is also used by various other devices. Bluetooth devices incorporate technology that minimizes interference from other devices using the same wavelength. However, communication speed and achievable distances may be reduced. Interference from other devices can also stop communications altogether.
- The data transfer rate will vary depending on distance and obstacles between devices, device configuration, radio interference, operating system, software application, and so on. In some cases, communication may be interrupted.
- Communication range will vary according to whether walls or other obstacles are located between devices, the material used in walls, the presence of radio frequency interference and other environmental conditions, and the type of software being used.
- If wireless LAN and Bluetooth functionality are used at the same time on the same personal computer, communication speed may be reduced due to electromagnetic interference, and other unwanted effects may occur.

**Maintenance**

When you clean the mouse, make sure to remove the batteries.

Clean the outside of the mouse with a soft, dry cloth or a soft cloth lightly moistened with a mild detergent solution. Do not use any type of abrasive pad, scouring powder, or solvent such as alcohol or benzine.

## Specifications

<b>Communication method</b>	Bluetooth Standard Ver. 2.1+EDR
<b>Position tracking method</b>	Laser sensor/Infrared sensor (Optical Finger Sensor)
<b>Sensor resolution</b>	300 dot/cm (800 dpi)
<b>Output</b>	Bluetooth Standard Power Class 2
<b>Communication distance</b>	10 m (32 ft.) max. line of sight *
<b>Frequency band</b>	2.4 GHz
<b>Power requirements</b>	3 V DC (two LR6 [SIZE AA] alkaline batteries)
<b>Battery Performance</b>	Approx. 2 months (alkaline batteries) **
<b>Dimensions</b>	Approx. 51.0 × 25.5 × 103 mm (2.1 × 1.1 × 4.1 in.) (w × h × d)
<b>Mass</b>	Approx. 105 g (3.8 oz) (including batteries)
<b>Operating temperature</b>	5 °C to 35 °C (41 °F to 95 °F) (temperature gradient less than 10 °C (18 °F)/hour)
<b>Operating humidity</b>	20% to 80% (not condensed), provided that humidity is less than 65% at 35 °C (95 °F) (hygrometer reading of less than 29 °C (84 °F))
<b>Storage temperature</b>	–20 °C to +60 °C (–4 °F to +140 °F) (temperature gradient less than 10 °C (18 °F)/hour)
<b>Storage humidity</b>	10% to 90% (not condensed), provided that humidity is less than 20% at 60 °C (140 °F) (hygrometer reading of less than 35 °C (95 °F))
<b>Accessories</b>	LR6 (size AA) alkaline batteries (2) <p>Installation CD (1)</p> <p>Carrying Pouch (1)</p> <p>Operating Instructions (this document) (1)</p> <p>Warranty Card (1)</p>

\* The communication range varies, due to walls or other obstacles between devices, the materials used in the walls, environmental conditions such as radio frequency interference, and the software program used.

\*\* This estimate is based on five hours of use per day, five days per week. Battery life will change based on the usage environment.

Design and specifications are subject to change without notice.

## Troubleshooting

If you have any problems, follow the explanations below, and check the mouse again. Details on solutions are also described in Help.

If you are not able to locate a solution, contact a Sony authorized dealer.

**The laser does not light up when you slide the power switch of the mouse to ON.**

→ The laser light from the lens is invisible. This is not a malfunction.

**The pointer/cursor does not move (smoothly) when I move the mouse.**

- Your computer’s operating system may not be compatible with this equipment.
  - Use a supported operating system.
- The mouse is not turned on.
  - If the mouse is turned off, the mouse and your personal computer (or PS3) cannot communicate. Slide the power switch of the mouse to ON.
  - Battery life may be running low. Replace the batteries. For more information, see “Inserting batteries into the mouse.”
- The mouse and the personal computer (or PS3) are not communicating.
  - For more information, see “Cannot connect to the personal computer (or PS3).”
- The mouse is being used on an unsuitable surface (in Mouse mode).
  - Due to the characteristics of the laser sensor, the mouse may not work properly on transparent surfaces. Avoid using on such surfaces, or use a commercially available mouse pad that is compatible with a laser sensor mouse.
- The CONNECT button is pressed while operating the mouse.
  - If the CONNECT button is pressed while operating the mouse, the mouse goes into a standby mode for about 3 minutes and cannot be operated during this time. If you press the CONNECT button, slide the power switch of the mouse to ON again, before starting to work with the mouse.
- The mouse may have difficulty communicating in an environment with 2.4 GHz wireless LAN or other Bluetooth communication.
  - It is best to use the mouse in a location with low interference from wireless devices.
  - Your mouse may be experiencing interference from other Bluetooth devices that are connected to your computer. Disconnect them all once, wait a few seconds, then connect them again.
  - Processing performed by Windows or other software may temporarily disable the mouse. Wait a few moments for the processing to finish before using the mouse.
  - You may find some useful solutions in your personal computer’s operating instructions. Refer to the manuals provided or included with your personal computer.

**Cannot connect to the personal computer (or PS3).**

- The mouse is not turned on.
  - If the mouse is turned off, the mouse and your personal computer (or PS3) are not communicating. Slide the power switch of the mouse to ON.
  - Battery life may be running low. Replace the batteries. For more information, see “Inserting batteries into the mouse.”
- Make sure your personal computer is set as below.
  - The WIRELESS switch is set to ON.
  - Bluetooth function is in operation.

For details on how to set the WIRELESS switch or Bluetooth function, refer to the manuals provided or included with your personal computer.
- Slide the power switch of the mouse to OFF once, and after a few seconds, slide it to ON again to connect to the personal computer. For details on connecting, see “Enabling communication between the mouse and your personal computer.”
- If the mouse and the personal computer (or PS3) are too far apart, transmission may be affected. The maximum communication distance between the mouse and the personal computer (or PS3) is about 10 m (32ft). If used on a metal table or if obstacles are between the mouse and the personal computer, the usable distance may be less. Connect the mouse and the personal computer (or PS3) as close as practically possible.
- Depending on usage environment, communication distance may decrease, and improper operation may result. In such a case, keep other electronic equipment away from the host field.

**The scrolling features do not work.**

- Your computer’s operating system may not be compatible with this equipment.
  - Use a supported operating system.
- A software not compatible with the scroll function may be running.
  - The program you are using is not compatible with the scrolling features.

**When I am using the mouse, the display goes dark or the personal computer enters power saving mode.**

- Change the power management settings for the personal computer to prevent it from entering power saving mode. For details, refer to the manuals provided or included with your personal computer.
- Touch the touchpad or press any key on the keyboard to exit power saving mode.

**Exiting power saving mode with the mouse is not possible.**

- Press any key on the keyboard of your personal computer.

**The mouse does not move smoothly after returning from the power saving mode.**

- Deactivate the Bluetooth connection, wait a few seconds, and then reestablish connection.

**I am asked to enter a key when connecting to my personal computer.**

- Enter “0000” as the key.

**Your personal computer fails to install the software.**

- Your computer’s operating system may not be compatible with this equipment.
  - Use a supported operating system.
- Close all software before installing.

**In Air mode, the pointer does not move (smoothly) when you touch the Optical Finger Sensor.**

- The mouse is set to scroll-lock mode.
  - Press the SCROLL button.
- The Optical Finger Sensor is dirty.
  - Clean the Optical Finger Sensor with a soft, dry cloth.

## Support options

**For customers in the United States and Canada**

- The Sony Customer Information Service Center offers information about your VAIO computer and other Sony products that work with your computer. To contact Sony Customer Information Service Center, call 1-888-4SONYPC (1-888-476-6972).
- Sony Computing Support provides instant access to information on commonly encountered problems. Type a description of the problem and the Knowledge Database searches for corresponding solutions online. You can visit Sony Online Support at: http://www.sony.com/pcsupport.

**For customers in Europe**

- VAIO-Link.** For addresses and phone numbers, refer to http://www.vaio-link.com

**For customers in other countries and regions**

- VAIO Website** provides Frequently Asked Questions and solutions. vaio-online.sony.com/